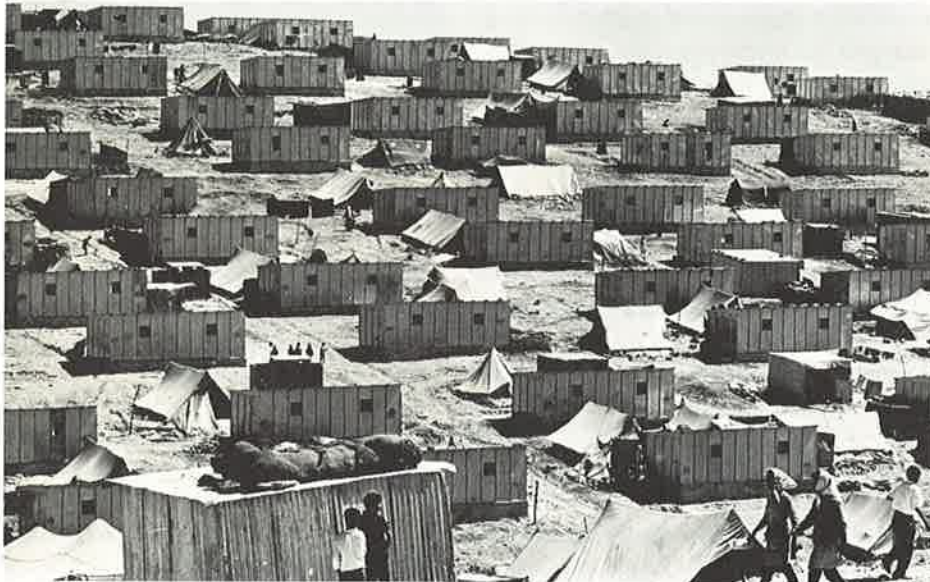


NEWSLETTER

Number 4

AMERICAN NEAR EAST REFUGEE AID, INC.

December 1969



These prefabricated shelters seen at the Marka Emergency Camp in East Jordan, are being used to replace worn tents. Many more are needed in Syria.

Dr. Davis Reports, "It's a New Middle East"

As I revisited the Middle East in October of this year, after an absence of only seven months, I felt like I was in a different Middle East. The confrontation between the Arabs and Israelis had mounted in tempo; the commando strength was noticeably greater; Israel's response to commando exploits was becoming more massive; refugee well-being had deteriorated — particularly in the Gaza Strip, Jerusalem and on the West Bank. America's standing in the Arab world had significantly deteriorated while that of the Soviet Union correspondingly increased and the commando movement was having marked political impact in numerous Arab countries — notably Lebanon and Jordan, but to some extent in all Arab countries.

The cause of the change on so great a scale was not hard to find — the dominant innovating force was the rising spirit and identity of the Palestine people. For eighteen years the Palestine Arabs had depended on Arab states and the world community of nations, working through the United Nations and this had not worked in terms of bringing peace. The shock of Arab defeat in June, 1967, and the subsequent occupation of Arab territory by Israel has changed all of this. The Palestinian Arabs were awakened to the fact that if they want redress for the injustices that they believed they had suffered, they must begin doing things for themselves. This they have now begun to do and with increasing vigor. The most

(Continued on page 3, col. 1)

FALL CONFERENCE MEETS

The Fall Conference on Arab Refugee Relief met at the United Nations Church Center in New York City on Friday, November 7th. The meeting, sponsored by ANERA, brought together for the second time in less than six months representatives of all the principal church related and voluntary organizations engaged in Palestine refugee relief.

The purpose of the meeting was to give the participants an opportunity to hear reports from Dr. Davis and other recent visitors to the area, to discuss the Palestine refugee situation as winter approaches, and to discuss the implications of the recommendations of the Cyprus Consultation of the World Council of Churches (see ANERA Newsline No. 3). The principal action taken by the conferees was the adoption of five resolutions calling for action by the United States Government and the news media (text below).

The Conference began with reports by Dr. Davis on his recent trip to the Near East and by Reverend Livingston Lomas, Church World Service, on the World Council of Churches-sponsored Cyprus Consultation, which he attended.

Dr. Davis stated that there is "a new Middle East" far different than the one he saw in January. Among the elements of change he mentioned the more ominous confrontations between the Arabs and Israelis, the growing impact of the commandos' activities on Arab governments, the worsening of living conditions of the refugees, the increasing bitterness towards American policy, and

(Continued on page 4, col. 1)

SEATTLE CHAPTER VERY ACTIVE

The Greater Seattle Chapter of ANERA has been one of the most active and effective groups to join ANERA in the one year plus of our existence. Formed originally as the Greater Seattle Committee to Aid the Arab Refugees in August of 1968 under the leadership of Jamil Razzak and Dr. Joseph DiCaprio, the group joined ANERA in December of that year. Since then, ANERA Seattle has kept in close touch with the national office while at the same time maintaining a high degree of local autonomy and activity. Recently, ANERA Seattle has taken an active role in a number of community projects.

On September 11th of this year, in cooperation with the local chapter of the United Nations Association, ANERA Seattle co-sponsored a luncheon for the new president of the U.N. General Assembly, Her Excellency Dr. Angie Brooks of Liberia. On October 19th these two groups again cooperated with the Olympia Brewing Company to produce a United Nations 24th Anniversary Concert. Among the pieces heard were Brahms' "Academic Festival Overture, op. 90," and Rimsky-Korsakov's "Festival at Baghdad" from "Scheherazade."

ANERA Seattle participated in the clothing drive of the Seattle Council of Churches in cooperation with Church World Service (see ANERA Newsletter of October). No details of how much clothing was collected were available at press time.

ANERA Seattle also contributed its name as an "interested party," (as did ANERA Washington) to the document presented to the State Department by the American Committee for Justice in the Middle East of Boulder, Colorado.

The Seattle Chapter is one of several ANERA chapters selling the Friends of Jerusalem Christmas cards. To date, they have received more than 2,000 cards from ANERA to fill existing orders. Card sales are being handled by Vice-Chairman Mrs. Betty Ann Sharif.

On October 5th ANERA-Seattle elected new officers. Mr. Jamil Razzak was elected Chairman to succeed Dr. Joseph DiCaprio. Dr. DiCaprio served as Chairman of the ANERA-Seattle chapter from December 1968 to the present. Mr. Razzak is no stranger to positions of

leadership in the cause of Palestine refugee relief as he served as Chairman of the Greater Seattle Committee to Aid the Arab Refugees before it became the Greater Seattle Chapter of ANERA.

Others elected were Vice-Chairman Mrs. Betty Ann Sharif, to replace Mr. Hamza Alami; and Mr. Salah Zaghaf was re-elected Treasurer.

Finally, the Greater Seattle Chapter of ANERA is conducting a membership drive with an announced goal of 100 new members.

ANERA wishes to congratulate its Seattle Chapter on its activities and asks all its other chapters and affiliates to send in reports of their activities so that they may be included in future Newsletters.

AMER-ANERA to Join Forces

American Middle East Rehabilitation, Inc. (AMER) decided at its November 6 annual meeting of the Board of Directors to merge wholly into ANERA. This decision was taken pursuant to discussions which began almost a year ago concerning a closer relationship between the two organizations. AMER will become a division of ANERA, retaining its own name and office in New York under Miss Mary Anne Kolidas, AMER Executive Secretary. AMER's work of solicitation and distribution of gifts in kind (primarily medical supplies and equipment) will continue as before. AMER contributors will be offered membership in ANERA and to the extent feasible may designate their contributions for support of the AMER division. A selected number of AMER directors will be elected as directors of ANERA. A Joint Committee composed of three representatives of each organization's Board of Directors met on November 13 in New York to work out in greater detail the next steps in the merger.

This coming-together of two complementary organizations will be extremely helpful to overall streamlining of collection of cash and gifts in kind for shipment to the Palestine refugees. AMER's long-established name and reputation will add significantly to ANERA's continuing efforts to provide a higher profile for efforts in this country on behalf of the Palestine refugees. We welcome the opportunity to work in concert with an organization as well-known and respected as AMER.



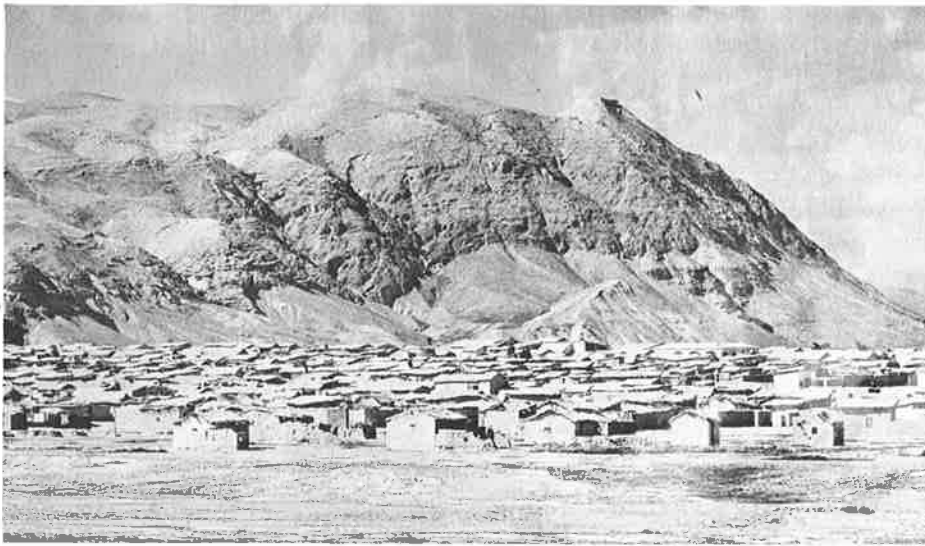
The Reverend Daniel Bliss, President of American Middle East Rehabilitation and member of the ANERA Board of Directors.

Direct-Mail Campaign Report

In the first week of October ANERA put out a 200,000 piece direct-mail fund campaign, the third and largest to date. Income from that mailing has now exceeded \$14,000 and will in all likelihood bring in more than \$15,000 total from 2,300 new contributors. Due to the problems of soliciting large numbers of "cold" contributors, costs for these initial mailings run high and will not be met by income from this mailing. The advantage of this effort, however, lies in the fact that proven contributors are an excellent source of subsequent contributions, since they have already demonstrated a willingness to give on behalf of the Palestine refugees.

Perhaps ANERA's most important mailing, its first follow-up appeal to the first 1500 ANERA contributors (from February and June 1969), has just gone out. Once results are in and can be analyzed, it will be much easier to determine the desirable level of future direct-mail appeals.

Direct-mail fund-raising is also an excellent means of informing large numbers of people about a crucial subject *even if they do not respond with money*. Direct-mail advertising must pay its own way and can become an excellent source of net income, but it has a significant additional benefit of *informing* people, the other half of ANERA's mandate.



The UNRWA camp at Aqabat Jaber on the West Bank of the Jordan near Jericho held 75,000 refugees before the June War of 1967. It now holds 4,000. The others who fled the fighting have not been allowed to return.

(Continued from page 1, col. 1)

visible aspect of the developing Palestinian movement is the commando action against Israel, and of increasing significance is its political impact on Arab governments.

With the coming of winter, the plight of the refugees will be particularly acute during the next few months. The situation is worst in Syria, just outside of Damascus where the refugees still live in tents. These tents are now in their third year and are showing signs of deterioration. UNRWA has no funds with which to replace them at this time. As the climate is cold and often damp, these people are sure to suffer.

The situation is only slightly less serious on the plateau near Zerka on the East Bank of the Jordan. The camps there have grown considerably in size in the last year. The housing in these camps is more substantial than in Syria, but still quite frail. It consists for the most part of pressed asbestos walls, metal roofs and earth floors. Here, too, the temperature is quite cold, and it snows more frequently than it does in Syria.

Even in areas where the climate is not so harsh as it is in Syria and Jordan, the situation of the refugees has become more difficult. As the tempo and intensity of the conflict between the commandos and the Israelis mounts, the life itself becomes more precarious.

The newest problem is the presence of commandos in the refugee camps. Unfortunately, the reaction of certain American Congressmen and Senators to

this development has been to consider cutting off funds to UNRWA for use in camps where there are commandos present. I feel sure that the cutting off of funds in this manner will not cause the commandos to leave the camps or reduce the level of their activity against Israel. On the contrary, young men who before were able to take advantage of the educational opportunities offered by UNRWA, will not hesitate to join the commandos when those opportunities are no longer available. In other words, cutting off UNRWA's funds will have a totally opposite effect of that desired by those who would do it, and additionally, will intensify the bitterness that the Arab people already feel towards the United States.

In the occupied areas, I found further evidence of strife between the Arabs and the Israelis. In Jerusalem the number of crossings between the Arab and Jewish sectors of the city decrease daily. Despite Israeli efforts to integrate the two sectors, they are gradually becoming mutually exclusive again. The Israelis, however, continue to construct government and apartment buildings in the Arab sector and in what was formerly no-man's-land.

The Musa Alami Center in Jericho is in excellent shape but shows some signs of damage. There are about 140 boys there and the regular class schedule is being maintained. 100 cows are producing milk currently, and more will come into production soon. Poultry production is down sharply because half the stock was destroyed when shells fell near the poultry building.

It is the policy of the Center to repair damage immediately, but as I walked around the farm, I could see the newly repaired scars left by shrapnel and bullets.

In the late afternoon of the day we were at the farm, we heard gun fire and what was probably the explosion of a mine, but it was not near enough to force us to go into the underground shelters.

The Musa Alami Center is facing some economic problems this year. Operating costs are materially higher this year and revenue from sales of products is lower, primarily because of the damage to chicken production.

One of the more pleasant duties which I performed while on the trip, was the presentation of the check for \$40,000 to Sir John Rennie, the Acting Commissioner-General of UNRWA. I was accompanied by Elie Khoury, President of U.S. Omen and member of the ANERA Board of Directors. The presentation took place at the UNRWA office in Beirut. The money is to be used for vocational training scholarships at UNRWA vocational training centers.

In summary, I found a new Middle East. One in which the Palestine refugees are going to play an increasingly important part. One in which the level of violence will continue to grow to an end no one can predict. It is a Middle East in which American influence and prestige are at an all time low. Furthermore, I expect that the situation will grow worse before it gets better.

The needs of the refugees are great and will probably continue to grow as the situation deteriorates. If ANERA is to continue to help to meet those needs, we must all redouble our efforts in the future.

ANERA DIRECTOR AUTHORS BOOK

Mr. Kennett Love has joined the list of ANERA Directors to have authored books about the Middle East. Mr. Love's contribution, *Suez: The Twice Fought War*, deals with the Suez crisis of 1956, its background and its relationship to the June War of 1967. Published by McGraw-Hill Book Company (New York and Toronto), the book is 767 pages long including maps, notes and index. The price is \$10.00.

Other ANERA Directors having authored books about the Middle East are: Dr. John H. Davis, Dr. Harry Howard and Mr. David Finnie.

(Continued from page 1, col. 3)

the mounting influence of the Soviet Union (for details see trip report in this issue).

Reverend Lomas struck an encouraging note, stating that he saw for the first time a recognition by representatives of western churches (particularly the Americans) of the need to cooperate with the Orthodox Churches and to involve the Palestinians themselves in church relief efforts. He further noted that the conferees saw the need for a redress of the grievances of the Palestine refugees if there is to be a lasting settlement of the Middle East problem

A brief report was also heard from Dr. Laurance Michelmore Commissioner-General of UNRWA, on UNRWA's situation and financial crisis.

In addition to the five resolutions, the conference set up a committee under the chairmanship of Reverend Walz to investigate ways of disseminating accurate information on the Middle East problem through church-related media.

The conferees also agreed to meet again in the spring.

RESOLUTIONS PASSED BY THE FALL CONFERENCE ON ARAB REFUGEE RELIEF

The undersigned representatives of church-related and other American voluntary agencies engaged in Arab refugee relief met in a fall conference in New York City on November 7, 1969. After considering, among other matters, a report of the UNRWA Commissioner-General and a report by two delegates to the recent World Council of Churches-sponsored Cyprus Consultation on the

Palestine Refugee Problem, the Conference adopted unanimously the following resolutions in the interest of a solution of this critical human problem:

1) We are concerned that the Palestinians and other Arab peoples displaced by the June 1967 war now face their third harsh winter in inadequate shelters despite the United Nations resolution of June 1967 calling upon the occupying power to permit their return to their homes. We, therefore, call upon the United States government to help put into effect the resolution which it supported with its vote in June 1967.

2) We call attention to the statement of the Cyprus Consultation that "we found that one obstacle to the action of the churches throughout the world was the lack of responsible information on the Palestine refugee problem." We, therefore, urge the communications media to give priority to informing Americans of the needs of the Palestinian and other Arab peoples displaced as a result of continuing conflict in the Middle East.

3) We endorse the Cyprus Consultation's recommendation that World Council of Churches priorities be reordered "to provide \$2,000,000 over the coming two years in support of the self-respect and individual integrity of the Palestinian refugees and displaced persons."

4) We reiterate the resolution passed by our group in July, 1969, calling upon the United States government to increase its support to UNRWA, in light of that agency's critical financial condition.

5) Finally, with full appreciation that the just solution of the Palestine and

other Arab refugee problems is the basis for peace in the Holy Land, we urge our government to exercise its influence to achieve implementation of all United Nations resolutions which relate to the Arab refugees' right to return and compensation for properties lost in Palestine.

KAMOL C. HAMADY

Mr. Kamol C. Hamady, a friend of ANERA, died on Friday, October 24 in Flint, Michigan at the age of 76. Born in Baakline, Lebanon, Mr. Hamady came to this country in 1910. He was a resident of Flint from 1911 until his death.

In the spring of 1969, Mr. Hamady and his family became Patrons of ANERA through the gift of stock in Hamady Bros. Food Markets, Inc.

Mr. Hamady is survived by his wife, two daughters, Mrs. David H. Small of West Berlin and Mrs. James F. Sams of Washington, D.C., the wife of ANERA's Treasurer and legal counsel; his son Karl Hamady of Washington, D.C.; three grandchildren, and a brother and five sisters, all of whom live in Lebanon.

ANERA BOOKS AUDITED

In July of this year, ANERA's books and records were audited by Price Waterhouse and Company for the preceding fiscal year. The audit showed receipts of \$242,190 and disbursements of \$179,908, or an excess of receipts over disbursements of \$62,282.

Copies of the full report may be obtained from ANERA upon request.



**AMERICAN NEAR EAST
REFUGEE AID, INC.**

900 Woodward Bldg.
733 15th St., N.W.
Washington, D.C. 20005