

Annual Report 2020



Cover: A participant from our mask-making initiative in Ein El Hilweh Palestinian refugee camp in Lebanon.



Inside: With coronavirus cases on the rise in Gaza, hygiene education and the distribution of hygiene kits are crucial for Palestinian families to stay healthy. Anera works with local communities in Gaza to improve personal hygiene practices and educate the public on COVID-19.

A LETTER FROM ANERA'S PRESIDENT & CEO

Dear Anera supporter,

For most people alive today, 2020 has been the most globally disruptive and devastating year in our lifetimes. For Anera and our staff in Palestine, Lebanon and Jordan, it was no consolation that the world shared almost universally the pain and challenges that we face in our work normally, often acutely and sometimes uniquely – lockdowns, restrictions on movement, strains on healthcare systems, discrimination and persecution against minorities, corruption and mismanagement, high unemployment, and precarious and faltering economies.

What did console us, and give us hope, was the response from our partners, supporters and staff. From four UN agencies; dozens of institutions, foundations, and companies; and thousands of families and individuals, Anera received and delivered, for the first time in our history, over \$100 million worth of critical humanitarian aid and development programming. Amidst the pandemic and continuing political and economic hardship, Anera staff stepped up and delivered.

I am pleased to share with you our annual report with some snapshots and statistics that show you what we did with your support this past year. We have more medicine and supplies to deliver, skills and tomatoes to grow, and bricks and cable to lay, before we can say we are “building back better.” But I can reassure you that your support of Anera’s work is part of the solution. You are bringing hope and better times, and better lives, to thousands of otherwise more vulnerable people in the Middle East.

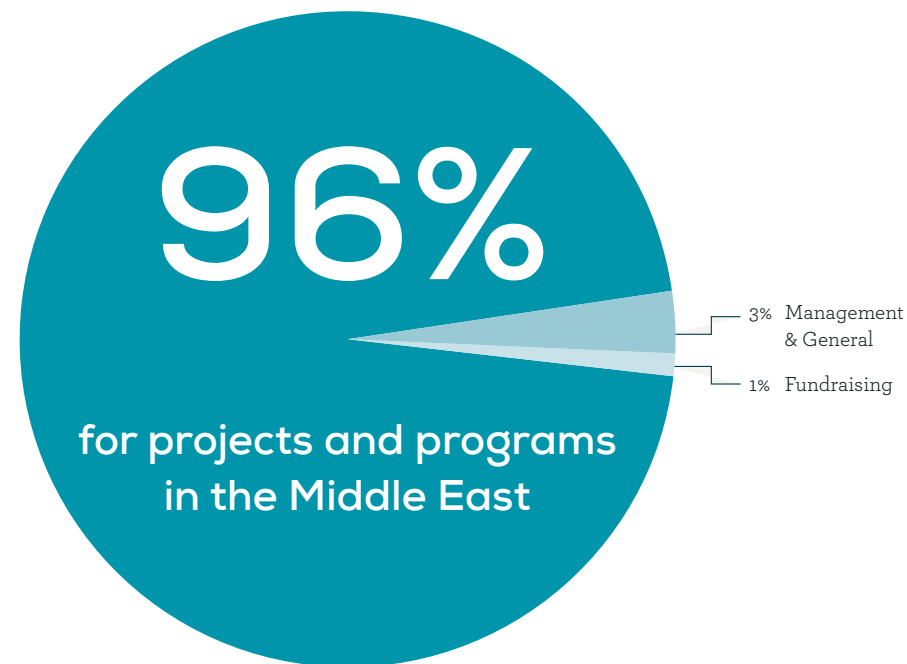
Thank you.

Yours in gratitude, Sean Carroll

Thanks to you and our local in-country partners, Anera delivered **humanitarian relief and sustainable health, education, and economic development projects totaling \$98.3 million** in 2020.

96 cents of every dollar you gave to us went directly to humanitarian projects and programs, including our rapid response to the COVID-19 pandemic, **across Palestine, Lebanon and Jordan.**

Program Expenses in 2020



To see detailed, audited financial reports, visit anera.org/financials

Trusted & respected...

52 years
delivering sustainable results and positive change in communities

Trusted
recipient of funds from the UN and international agencies for 40+ years

\$100.4 million
donated by thousands of individuals and organizations in 2020

Transparent
financial statements and audits available at anera.org/financials

Top charity
high rankings from Charity Navigator, BBB and Guidestar

With your support in 2020...

200,000+ people

accessed Anera's COVID-19 health messages through WhatsApp, social media and radio.

5,264 youths

from Lebanon's camps and surrounding communities learned Arabic, English, math and job skills.

715 preschoolers

began learning in newly built or renovated schools in the West Bank and Gaza.

65 software engineers

from Palestine graduated from Anera's new tech career accelerator program.

2,637 vocational students

in Lebanon earned income while working on community improvement activities with Anera.

EDUCATION



//

I learned a lot about programming and software. I learned how to deal with stress. I learned to accomplish tasks quickly and efficiently. It's a golden opportunity."

- Walaa, 19-year-old from Gaza, Palestine

Walaa studies computer systems engineering at Al-Azhar University and graduated from the Anera+RBK PLUS coding program. The program produces high quality software engineers in just 16 weeks using a curriculum developed in Silicon Valley.

//

Had it not been for this course, my family and I would have ended up on the streets. It gives me hope. It feels good to be able to support my family."

- Abdul from Beddawi Palestinian Refugee Camp, Lebanon

The 22-year-old graduated from Anera's vocational sewing course and can now support his family thanks to income he earns producing masks in the fight against COVID-19 in Lebanon.



//

We seek to make access to preschool education a reality for young children in some of Palestine's most remote and disadvantaged communities."

- Sulieman Mleahat,
Anera's education program manager in Palestine

Anera completed construction of a new public preschool in the village of Madama, in Nablus, Palestine. The school opened to children for the 2020-2021 school year after delays due to COVID-19.



With your support in 2020...

56 shipments (valued at \$82.8 million)
of donated medicines and supplies went to hospitals
and clinics across Palestine, Lebanon and Jordan.

35,000 elderly Palestinians
in Lebanon reliably accessed medicines for heart
disease, diabetes, high cholesterol and hypertension.

38,113 families
received hygiene kits across Lebanon and Gaza
— vital in the fight against COVID-19.

\$185,783 in cash assistance
helped 2,500 families in Lebanon to pay off debts
and buy basic supplies, like food and clothing.

5,850 food insecure families
in Lebanon and Gaza received parcels filled
with enough food for several weeks.

HEALTH & RELIEF



**“We are so thankful to Anera
donors for providing the
medicines my children need to
treat their disease.”**

— Mohammed and Sara’s mother at the
Caritas Children’s Hospital in Bethlehem, Palestine
*Mohammed, 15, and Sara, 13, are siblings who each
have cystic fibrosis. Thankfully both are able to get
the vital medicines they need
through medical donations from Anera.*

**“To improve life for children
in Gaza, we have to tackle
the water issue on all levels.”**

— Dr. Al Wahaidi, director of the Ard El Insan clinic
in Gaza City, Palestine

*To help address the ongoing water crisis in Gaza, Anera donors
provided a new desalination unit at the Ard El Insan clinic. This
youngster is drinking from the public fountain Anera installed
outside of the clinic.*



**“Normally, we won’t expect
a package that contains
vegetables, but this time we
did. It meant a lot to us.”**

— Rahma, a mother of nine in Zeitoun, Gaza

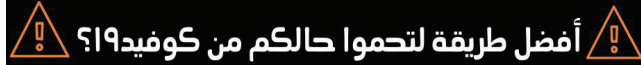
*Rahma’s family has very little income and lives in a cramped home
with almost no furniture. Hers was one of 3,552 families to whom
Anera distributed generous Ramadan food parcels that included
ample fresh produce from from farmers in our greenhouse project.*



Fiscal year 2020 ushered in the era of COVID-19. Anera's donors and partners really came through for Palestine, Lebanon and Jordan.

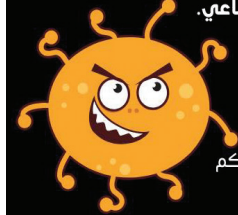
Thank
you!

الوقاية بتبلش من عندي، عندك، و عنّا كلنا!



أفضل طريقة لتحموا حالكم من كوفيد-19؟
خليكم بالبيت!

مضطرين تطلعوا من البيت بالنهار، و ما بدكم يرجع معكم الكورونا؟
ضروري تلتزموا بالإرشادات العافة و أهمها، التباعد الإجتماعي.



خلوا بينكم و بين أي شخص عاقلية مترين!

ما تسلموا على أي حدّا بالإيد.

غسلوا أو عقموا إيديكم كل ساعة تقريباً.

تذكروا! إنو ممكن تكونوا حاملين الفيروس بلا ما تظهر عليكم.

العوارض و فيكم تنقلوا لأهاليكم.

خلونا نكون واعيين و نأخذ الأمور بجديّة لحتى مانندم.

Reaching
200,000+
people with
messages
about how to
stay healthy.

Delivering hygiene
kits 38,113 families
in Lebanon and Gaza.



Making 1,500,000 face masks
while employing our sewing
students.

Making 30,000+
hot meals and
distributing
15,000+ food
parcels to
families
throughout Gaza
and Lebanon.



Sending dozens
of shipments
of medicines
and PPE to
health care
facilities across
Palestine and
Lebanon.



Taking
our basic
education
and job skills
classes to an
online platform.



With your support in 2020...

160,000 Palestinians

gained access to clean water through well repairs and installation of water filtration systems in Gaza.

1 waste sorting facility

opened in Temnin El Foka, Lebanon to recycle materials and mitigate dumping and trash burning.

797 young entrepreneurs

throughout Lebanon received kits with tools to get their businesses started.

218 Gaza farmers

improved their crop production through greenhouse construction or repair.

109 Palestinian women

built up their small businesses to better support themselves and their families.

COMMUNITY



//

For many of these women, it's transformational – moving them from a state of depression and inaction to becoming decision-makers and leaders in their communities."

– Nariman Othman, Anera's Women Can program coordinator in Palestine

Nabeha (pictured) is a widow and mother of four from the village of Aleban Al Sharqeyah in the West Bank. Through Anera's Women Can program, Nabeha was able to purchase a freezer, mixing equipment and a small work space for her growing food delivery business.

"This greenhouse has had a huge impact on my life."

– Mahmoud, farmer from Rafah, Gaza, Palestine

Before Anera finished building his new greenhouse, Mahmoud did not have stable work. Now he is able to support his family with a sustainable food source and extra income.



//

"I landed a job, in a field I love...I'm supporting my family and putting money aside for my future."

– Norma, a young Lebanese woman from North Lebanon

Norma knew early in her life that traditional school was not for her. She loved cosmetology and when she learned of Anera's courses she enrolled. She graduated with top marks and is now earning an income in her chosen field. Norma's goal is to become a make-up artist someday.



Medical Donations Partners

Americares
Catholic Medical Missions Board
Direct Relief
Health Partners for International of Canada

International Health Partners
Johnson & Johnson
Lutheran World Relief
METAD

Sanofi Genzyme Coporate
Thaki
TOMS Shoes
Wheels to Heal

Matching Gift Donors

AbbVie
Anonymous
Bank of America Charitable Foundation, Inc
Bristol-Myers Squibb Company

Chevron Humankind Program
Cleveland H. Dodge Foundation, Inc.
Exxon Mobil Foundation
IBM Employee Services Center
International Monetary Fund (IMF)

Medtronic Foundation
Merck Foundation
Salesforce Matching Grants
Virginia Wellington Cabot Foundation
World Bank Community Connections Fund

Bequests

Anera mourns the passing of these valued members of our community. Through their bequests, they continue to demonstrate their generous spirit and commitment to Anera's work and set an example for others. These gifts mean Anera will be here tomorrow, so people throughout the Middle East may live with the dignity and opportunity they deserve.

Jean K. Andrews	Wendy Klodt
Margaret Boss	Philip O. Koch
Constance C. Cornog, M.D.	Cherie A. Loustaunau
Afaf Aida Dubbelday	Catherine Lynch
Allen Goldman	Titus Family Trust
Amand N. Kasimatis	Serge Valle
Eve G. Kingsland	

Anera Legacy Society
Supporters who included
Anera in their wills in 2020.
Ellen Siegel
Anonymous (7)

Learn more at
anera.org/legacy

Funding Organizations

\$1,000,000 and above

Islamic Relief USA
UNHCR
UNICEF
UNOCHA

\$100,000 - 999,999

Ajram Family Foundation
Alumbra Innovations Foundation
Ghiath and Nadia Sukhtian Foundation
Islamic Cultural Center Of Fresno
Ray of Light Foundation
The Jim Pattison Group
United Methodist Committee on Relief
Anonymous (1)

\$50,000 - 99,999

Reach Out to Asia, A Program of Education
Above All

\$25,000 - 49,999

Dubai Cares
Foundation For Middle East Peace
Padosi Foundation
Zakat Foundation of America

\$10,000 - 24,999

Albert Kunstadter Family Foundation
Alice Rowan Swanson Foundation
Embassy of the United Arab Emirates
FIFA Foundation
Jewish Communal Fund
McMillan-Stewart Foundation
National Arab American Medical Association Foundation
Nint Foundation
streetfootballworld
Sultan Qaboos Cultural Center

\$5,000 - 9,999

Arizona State University
Israel/Palestine Mission Network
National Institute for the Clinical Application of Behavioral Medicine
Sanofi Genzyme
The New York Community Trust
Westmoreland United Church of Christ, Bethesda, MD

\$1,000 - 4,999

Champlin Park High School
Community Foundation of Tampa Bay
Craving Palestine
Interaudi Bank
Islamic Cultural Center of Greater Chicago
Nuance Foundation
St. Pau's Episcopal Church - Brookline, MA
Truist
World Bank Community Connections Fund
World Street Kitchen



These youngsters are Syrian refugees in Lebanon. Their family got cash assistance from Anera. Like most Syrians in Lebanon, the family rents their home informally and therefore are not covered by legal protections for tenants.

Board

Officers

Joseph P. Saba, Chair

Adjunct Professor, Georgetown University
Senior Advisor & Consultant for Operations in
Conflict & Fragile States

Grace Tompkins, Vice Chair

Former Project Manager, The World Bank

Lawrence A. Hamdan, Treasurer

Executive Chairman, Global Mergers &
Acquisitions, Barclays Capital

George Doumar, Legal Counsel

Doumar Martin, PLLC

Sanaa Abouzaid, Secretary of Corporation

Regional Corporate Governance Lead, MENA -
International Finance Corporation

Members

Jihan Andoni

CEO, Zeva Incorporated

Ahmad Ashkar

Founder and CEO, Hult Prize Foundation;
Founder of Falafel Inc.

Dr. Grace Baliunas Austin

Former periodontist; Author

Zeina Azzam

Publications Editor, Arab Center
Washington DC

Teresa C. Barger

Founding Chief Executive Officer & Chief
Investment Officer, Cartica Capital

Judy M. Barsalou, Ph.D.

Former President, El-Hibri Foundation

Kenneth H. Close

CEO & Founding Partner, The Quincy Group

Faris Eid

Founder & President, Design Innovations
Architects, Inc.

Leena El-Ali

Managing Partner, Bona Smarts, LLC

Amb. Edward “Skip” Gnehm (Ret.)

Vice Dean, Elliott School of International
Affairs, George Washington University; Former
Ambassador to Jordan, Kuwait, Australia; Deputy
Head, U.S. Mission to the U.N.

John Gurley

Partner, Arent Fox

Matt Haddad

Senior Associate General Counsel at Anthem, Inc.

Michael C. Hudson, PhD

Seif Ghobash Professor of International Relations
and Arab Studies, Emeritus, Georgetown University

Stephen Karam

Independent Consultant, Urban Economist

Piney Kesting

Owner, Piney Kesting, Writing and Consulting

Nabil Elie Khoury, M.D., F.A.C.E.P., F.A.C.P.

Medical Director, Department of Emergency
Medicine, Sparrow Hospital Regional Medical
Director, Emergency Physicians Medical Group

Rania Kiblawi

Senior Public Affairs Advisor at Aramco Services
Company

Samar Hussein Langhorne

Nonprofit Organization Management Professional

Jeffrey Mansour

Program Director, Thompson Charitable
Foundation

Robert Anton Mertz, Ph.D.

Former Project Manager, The World Bank

Thairah “Cindy” Mousa

Director Employee Relations, Ochsner Health
System

Kathleen Ridolfo

Executive Director, Sultan Qaboos Cultural Center,
Embassy of the Sultanate of Oman

Fred Rogers

Vice President & Treasurer, Carleton College

James K. Sams

Principal, KPMG LLP

Murad M. Siam

Co-Founder, President & CEO, IDS Real Estate
Group, Inc.

David Sprague, Ph.D.

Independent Education Consultant; Former
Director, Education Policy & Data Center Academy
for Educational Development

Robert Trice

Senior Vice President for Corporate Strategy
and Business Development, Lockheed Martin
Corporation (Ret.)

Staff

WASHINGTON, DC

Sean Carroll, *President
& CEO*

Lola Akinuli

Hamsa Al Qaraghuli

Christina Andeweg

Rula Kort

Liz Demarest

Donna Diane

Dina Dukhqan

Steve Fake

Holly Jordan

Maggie Forster Schmitz

Nisreen Khalaf

Skylar Lawrence

Samantha Molt

Elizabeth Obeidat

Molly Pasquarella

Daniel Riley

Christina Schnoor

Ally Schultz

Timothy Shay

JORDAN

Carina Aoun

LEBANON

Beirut

Samar El-Yassir, *Lebanon
Country Director*

Omran Abdelghani

Naghham Mohamad Al Hendi

Lina Atat

Leen Ataya

Reem Aziz

Ali Bahsoun

Maria Berbari

Rana Charide

Serene Dardari

Hiba El Safadi

Maya El Saleh

Mohamad Eter

Natalie Fakih

Ahmad Fares

Sirine Fattoum

Lama Ghaddar

Sarah Hachem

Aya Hawarni

Sara Hijazi

Mohamad Khaled Hussein

Maya Ismail

Ziad Kaawache

Mohammad Hammam

Kaddoura

Walaa Kayyal

Amani Kibrit

Louai Ladiki

Oussama Majzoub

Charbel Moghaizel

Reine Moubayed

Dina Sabeh

Maya Saleh

Malakeh Terkawi

Yara Yassine

Christine Zahm

Dima Zayat

Akkar, Lebanon

Saleh Abdul Wahhab

Mayssa Qassem

Marwa Saadi

Alaa Yacoub

Bekaa, Lebanon

Mahmoud Abdullah

Laury Acaf

Mohamed Awad

Maha Chaddad

Mohamad Flity

Charbel Haddad

Diana Abou Hamia

Sarah Hazar

Hicham Houchaimi

Mohamad Kanawaty

Racha Khatib

Ali Raad

Mohamad Rifai

South Lebanon (Ein El Hilweh & Tyre)

Ahmad Daher

Mohamad Kaddoura

Dalal Moussa

Oyoun Shabayta

Tripoli

Safaa Al Ahmad

Ahlam Chalabi

Bassam El Qadi

PALESTINE

Jerusalem

Jack Byrne, *Palestine Country
Director*

Mamoun Abu-Gheith

Heba Alatshan

Tamara Handal Al-Hodali

Barihan Al-Khatib

Mazen Dabbagh

Amjad Ebeid

Denise Habash Hazboun

Emile Makhlof

Lana Nouredin

Beitin, West Bank

Mohammad Atieh

Hani Khleif

Mohammad Mahmoud Ma'tan

Ramallah, West Bank

Miral Al-Bess Karakra

Nariman Othman Deik

Sulieyman Mleahat

Naser Qadous

Gaza City

Mohammed Abu Jahal

Nahed Al-Wehaidi

Mostafa Al Ghosain

Lana Al-Qedwa

Rania Elhelo Al-Namara

Sami Matar

Ahmad Najjar

Ibrahim Najjar

Marwa Sbeih

Mousa Shawwa



Aisha, an 80-year-old Palestinian
in Lebanon who Anera supports.

“I want to tell the young Palestinians everywhere that they should unite and remain united. Help one another. Stand with each other as one and keep Palestine on your mind in everything you do. Plan for returning to our Palestine and do not allow anyone to put shackles on your dreams.”

BOARD & STAFF

Statement of Activities & Changes in Net Assets

	2020	2019
Support and revenue		
Non-financial contributions	\$84,820,650	\$30,850,680
Governmental grant revenue	171,198	11,839,067
Non-governmental grant revenue	9,563,442	7,694,884
Contributions	5,635,182	5,609,822
Investment income, net	187,890	197,380
Other income	29,967	4,808
Total support and revenue	100,408,329	56,196,641
Expenses		
Program services		
Medical donations & health services	83,709,078	29,991,418
Community & economic development	3,904,993	13,986,069
Education	6,571,548	4,879,808
Total program services	94,185,619	48,857,295
Supporting services		
Management & general	2,896,260	2,592,090
Fundraising	1,216,299	1,609,931
Total supporting services	4,112,559	4,202,021
Total expenses	98,298,178	53,059,316
Change in net assets	2,110,151	3,137,325
Net assets:		
Beginning	14,471,528	11,334,203
Ending	\$16,581,679	\$14,471,528



The Temnin El Foka waste sorting and composting facility, located in Lebanon's Bekaa Valley, is now fully operational. The facility provides much needed jobs and municipal income from the sale of recyclables and fresh compost while improving the environment. Anera provided residents in the area with bins and training in how to sort their waste at home.



2020 FINANCES

June 1, 2019 - May 31, 2020

HOW YOU CAN GET INVOLVED

In 2020, **Anera donors like you positively impacted the lives of thousands of people** in vulnerable communities **across Palestine, Lebanon and Jordan**, but **we need your help** to do more.

As **a valued member of the Anera community**, we invite you to become more involved – whether it's spreading the word, fundraising, attending an event or donating.

BE IN THE KNOW

anera.org

Check out our website featuring photos, videos, statistics, success stories and more.

anera.org/blog | *The Olive Press*

Our blog features a wide variety of perspectives from our areas of work.

anera.org/events

Come to an event near you and learn about the programs we deliver.

Facebook | Twitter | Instagram | YouTube

Follow us on social media to view photos and be up-to-date on all of our work. [@aneraorg](https://twitter.com/aneraorg)

DONATE OR RAISE MONEY

anera.org/fundraise

Set up your own fundraiser for a run or bike ride, an event, your birthday, or a special time of year.

anera.org/monthly-giving

Join our Visionaries, a group of committed monthly donors creating long-term impact.

anera.org/legacy

Your planned gift ensures that Anera will be there tomorrow.

anera.org/donate

Make a donation now to fund the quality programs Anera is delivering today.

MIDDLE EAST OFFICES

Lebanon

Akkar
Beirut
Bekaa
Ein El Hilweh & Tyre
Tripoli

Palestine

Beitin
Gaza City
Jerusalem
Ramallah

Jordan

Amman

LEBANON

WEST BANK

JORDAN

GAZA



Feeding a hungry child is an act of compassion
– not a political statement.

Providing safe places for young people to
learn and grow helps build community
– not division.

Easing refugees' suffering, caused by war and
poverty, should inspire our shared responsibility
– not controversy.

Giving disadvantaged families access to
reliable livelihoods creates peace
– not conflict.

Ensuring that our most vulnerable communities
have access to clean water is a right
– not a privilege.

As a human being,
standing up for those who need help
is not a difficult decision.

Will you join us?

Anera

1111 14th Street NW, #400
Washington, DC 20005
anera@anera.org
202.266.9700

anera.org