



**2024**  
June 1, 2023 - May 31, 2024

**Annual  
Report**





Displaced families at Anera's solar-powered community kitchen in Mawasi, Khan Younis, Gaza. Jan. 2024.

## A Year of Growth and Impact

As evidenced in this Annual Report, during the 2024 fiscal year, Anera experienced growth and gained momentum that prepared us for the unprecedented challenges we faced since October 7, 2023.

For 56 years Anera has helped donors transform their passion for the causes they care about into positive results for the displaced and vulnerable communities we serve. The needs have never been greater. This Annual Report testifies to the impact of our donors' generosity, investments and commitment to fulfilling Anera's mission.

To all our donors, partners, and all those who have let us share in their generosity, and on behalf of our dedicated staff and the Anera Board of Directors, we offer our sincere gratitude.

Thank you for supporting and inspiring us.

Sincerely,

*Joseph B. Saba*

Joe Saba, Anera Board Chair

*Sean Carroll*

Sean Carroll, President & CEO

Cover photo: Freshly baked bread from Anera's community kitchen in Gaza's middle area. May 2024

## By the Numbers

**\$176 million** worth of assistance delivered in Palestine, Lebanon and Jordan

**26,639,748** servings of hot meals, fresh bread, food parcels, fresh produce and meat distributed to displaced families in Gaza

**101 humanitarian aid shipments** delivered, providing food, hygiene kits, medicines, shelter items and more

**\$5.5 million invested on education programs** training youths, building schools and keeping girls at risk of early marriage in school

**249 farming families** across Lebanon, Jordan and Palestine equipped with the means and tools to grow their own food and earn extra income

## Trusted & Accountable

**70,000+** people from 141 countries and all 50 states donated to Anera in 2024

**56 years** delivering sustainable results and positive change in communities

**Trusted** recipient of funds from the UN and other international agencies for 40+ years

**Transparent** financial statements and audits available at [anera.org/financials](https://anera.org/financials)

**Top charity** rankings from BBB, Charity Navigator and GuideStar



# YOUR DONATION IN 2024...



Provided 9,059 young people in Lebanon with **skills and job opportunities**.



Launched 512 graduates from our youth skills training program into **new jobs**.



Enabled 770 girls in Lebanon to stay in school, **reducing early marriage** risks.



Set up **computer labs** in three refugee camps in Jordan for 208 students.



Built three new **kindergartens** in Palestine, including one in Gaza before the war.



**Trained** 20 youth in Lebanon to produce thousands of winterization items for displaced families.



**Adnan** Adnan is a 19-year-old from Beirut who participated in Anera's Youth Empowerment, Education & Employability Program in Lebanon. Economic challenges prevented him from continuing his university education, but through Anera's program, he gained new skills in food safety and health protocols. The training equipped him with practical skills in a field he enjoys, offering him both a sense of direction and a connection to employment opportunities.

**"The course gave me the push I needed... and I learned the importance of teamwork and how people can inspire each other through collaboration."**



**Kinda Al-Adwan** Kinda, the driving force behind Anera partner, / Learn Jordan, is dedicated to empowering youth in Jordan's refugee camps. Thanks to the support of Anera, her organization provides vocational and digital skills training to help young refugees, especially women, overcome limited access to education and employment, creating brighter futures for themselves.

**"Our goal with this program is to offer young people vocational education opportunities that not only sharpen their practical skills but also nurture their personal growth, opening doors to the job market."**



**Hayat** Hayat, a young woman from Lebanon, shifted from management information systems to nursing during the economic crisis. Recognizing the growing demand for healthcare professionals following the COVID-19 pandemic and the brain drain in the field, she made a bold decision to switch careers after graduation, opting to study nursing. This choice reflected her determination and her desire to contribute meaningfully to her community. After enrolling in a healthcare refresher course with Anera, she secured job offers at respected medical institutions.

**"Persistence and determination are key to overcoming challenges and achieving success in any endeavor."**



## YOUR DONATION IN 2024...



Installed 204 **rooftop gardens** across Lebanon, Jordan and Palestine.



Equipped 45 Akkar farmers with **greenhouses**, yielding \$42,060 in crops.



Supported 94 women-led households in Palestine to **start or expand businesses**.



Provided 1,000 preschoolers in Gaza with **daily meals** before the war, **connecting farmers, cooperatives and schools**.



Improved **clean water and wastewater access** for 56,000+ in Gaza before the war.



**Ghada** Ghada and her family live in Hitteen Camp in East Amman, Jordan, where they benefit from an Anera rooftop greenhouse and training. Facing chronic food security challenges, families like Ghada's in Hitteen Camp are supported by Anera's efforts to create sustainable food sources amid rising prices and scarcity.

**"I raised them like I raised my own children. I started with them while they were young and they grew to become adults and give me their fruits."**



**Ismail** Ismail is a participant in Anera's agricultural training course for young adults in the Akkar region of Lebanon. Amid rising food insecurity, a struggling economy, and ongoing conflict in southern Lebanon, training in domestic agriculture and food production is crucial for the country's recovery. This program not only equips young people like Ismail with essential skills but also fosters sustained growth and resilient local communities, playing a vital role in Lebanon's future stability.

**"I've gained self confidence and I've learned commitment."**



**Nahla** Nahla, at 58, is the sole breadwinner for her five children and husband, having stepped into this role after her husband was injured in a traffic accident. Previously a hairdresser with cosmetology training from Ramallah, she had hosted women at home for beauty services but felt the urge to open her own salon. Despite her challenging circumstances, she proposed the idea to her family, and her brother generously donated a space for her venture. Now, with support from Anera's *Women Can* program, she is furnishing her salon from scratch and receiving guidance to enhance her business.

**"Besides the financial help, the administrative and professional information that we gained in the training is very useful."**

## COMMUNITY DEVELOPMENT





# YOUR DONATION IN 2024...



Delivered \$134 million worth of **humanitarian aid** to Palestine, Lebanon, and Jordan.



Conducted 97 **health clinic** days in Gaza benefiting 19,156 patients from displaced families.



Facilitated the delivery of 13,000 medicine doses to **treat chronic conditions** in Lebanon.



Distributed in Jordan **anticancer medicines**, worth \$8.6 million, to clinics in underserved areas.



Installed 4 **solar systems** on healthcare centers in Lebanon, ensuring operational stability.



Provided **menstrual health kits** to 2,359 women in Gaza during the war.



**Ahmad Najjar** Ahmad, Anera’s medical donations program officer, works at his laptop in Anera’s distribution center in southern Gaza, using a car battery to power it. He meticulously checks inventory lists of medicines and medical supplies destined for clinics and hospitals throughout Gaza. Along with the entire medical donations and logistics team spanning Palestine, Jordan, and Egypt, Ahmad has helped facilitate the delivery of critical medicines and medical supplies, ensuring they reach those in need, all made possible through the generous support of the Anera community.

**“While not every family has a unique tale, each individual has a story to recount about their personal struggles in this devastating war.”**



**Mariana Kharram** Mariana, a pharmacist at Rafik Hariri University PHC Center, has seen firsthand the growing number of patients turning to public healthcare amid Lebanon’s economic crisis. With prices in local pharmacies skyrocketing, many women can no longer afford essential prenatal vitamins. Thanks to a donation from Anera, her clinic is now able to distribute much-needed vitamins, medical supplies, and reading glasses.

**“With Lebanon’s ongoing crisis, more and more people are turning to public healthcare as their best option. Every pregnant woman needs these vitamins.”**



**Alaa Morra** Alaa, UNRWA’s mental health and psychosocial support field coordinator in Lebanon, emphasizes the importance of Anera’s medical donations, particularly mental health medications. With the sharp rise in medication prices and increasing demand for mental health services, these donations are essential in preventing care disruptions for vulnerable patients. Thanks to the contributions from the Anera community, clinics remain operational, playing a vital role in addressing Lebanon’s escalating mental health crisis.

**“The [mental health medicine donation] addresses the needs of patients dependent on this medication, preventing potential disruptions in their mental health treatment.”**





# The Challenges of Delivering Aid in Gaza

**Widespread Conflict:** Fighting affected all of Gaza, causing mass displacement and overcrowding.

**Logistical Hurdles:** Securing permissions, navigating routes, and last-minute changes caused significant delays.

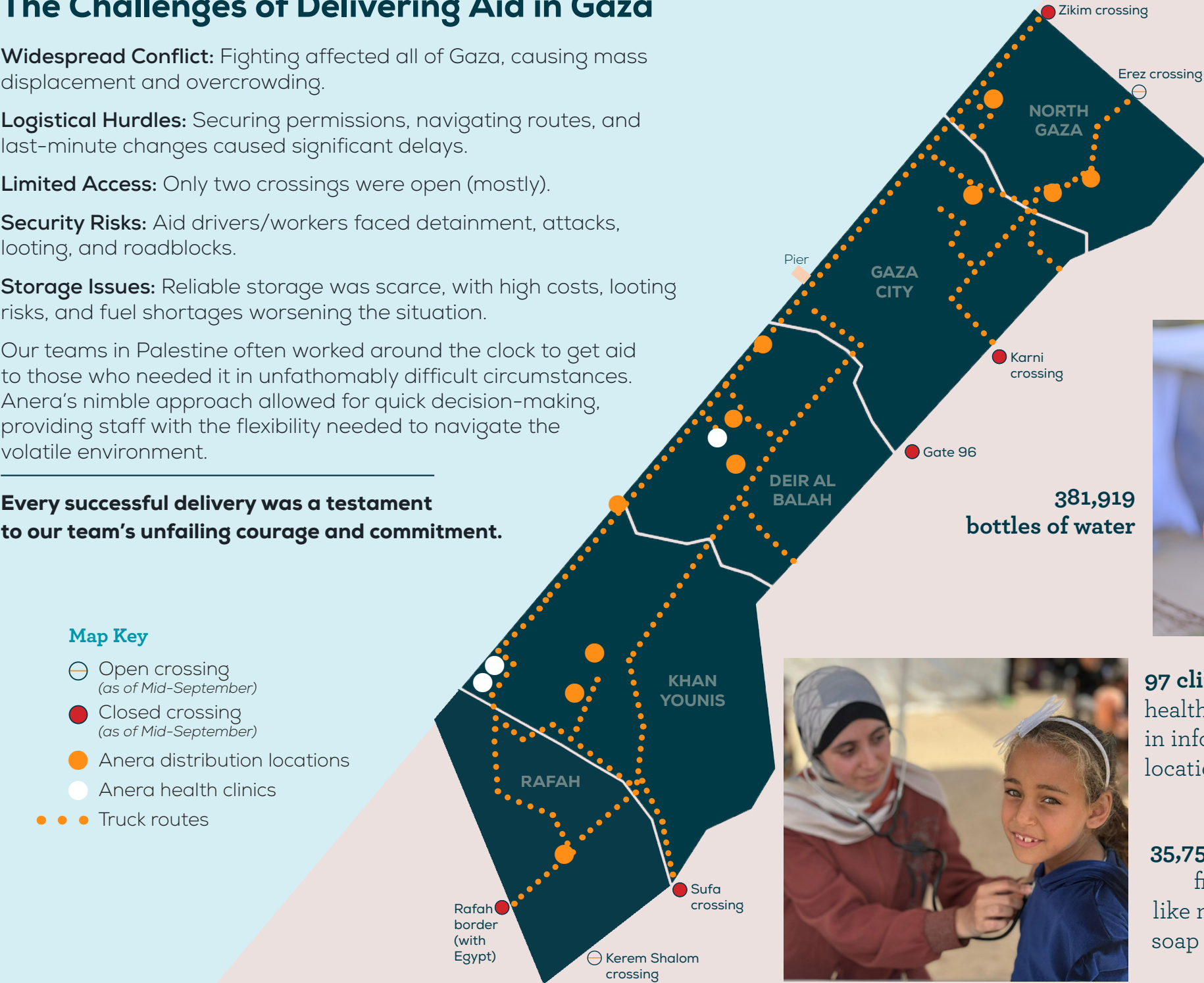
**Limited Access:** Only two crossings were open (mostly).

**Security Risks:** Aid drivers/workers faced detainment, attacks, looting, and roadblocks.

**Storage Issues:** Reliable storage was scarce, with high costs, looting risks, and fuel shortages worsening the situation.

Our teams in Palestine often worked around the clock to get aid to those who needed it in unfathomably difficult circumstances. Anera's nimble approach allowed for quick decision-making, providing staff with the flexibility needed to navigate the volatile environment.

**Every successful delivery was a testament to our team's unfailing courage and commitment.**



## Map Key

- Open crossing (as of Mid-September)
- Closed crossing (as of Mid-September)
- Anera distribution locations
- Anera health clinics
- Truck routes

## Your Impact in Gaza

In Gaza, Anera's work focused on delivering essential food, water, and healthcare to displaced families in need. **In fiscal year 2024, you helped deliver...**

**26,639,748 food servings**  
hot meals, fresh bread, food parcels, fresh produce, meat



**381,919 bottles of water**

**291 psychosocial sessions**  
to support the mental health of children and their caregivers affected by war



**97 clinics** offered healthcare services in informal camp locations



**35,759 hygiene kits** filled with items like menstrual pads, soap and toothpaste





YOUR DONATION IN 2024...



Coordinated the entry of 648 **trucks** into Gaza carrying essential supplies.



Supported 243,000 displaced people in Gaza with **non-food items**, like medicines and tents.



Reached 6,078 Gaza children with **psychosocial support** to cope with trauma.



Provided 77,498 people in Lebanon with **job support, food, cash, education and medication**.



Distributed 2,211 **food parcels** to serve 10,540 people across Lebanon.



Distributed 3,000 Ramadan **food vouchers** and 4,000 **daily meals** to vulnerable families in Jordan.



**Rabab** Rabab, from Beit Hanoun in northern Gaza, and her family were displaced after they received evacuation orders. They headed south to the city of Deir Al Balah in the central Gaza Strip and have been there ever since. Through an Anera community kitchen (“tekia”), Rabab and her family now have a stable source of nutrition. She says the moment her children return to her with food from the tekia in their hands is the most beautiful moment of the day.

**“Leaving our home marked the start of our battle to feed our children. The first three months afterward were defined by one word: hunger... Our sustenance now relies solely on the nearby tekia.”**



**Abed El-Halim Ayash** Abed, chief of a health intervention unit, has been at the forefront of the response to the escalating conflict in southern Lebanon since October 2023. Amid the growing need for immediate medical assistance, Anera provided critical emergency backpacks to frontline responders like Abed.

**“This kit serves as a mobile clinic, equipped with everything a paramedic needs in the field. It’s been a lifeline, empowering us to effectively assist the injured and sick. Without these tools, our work would be severely compromised.”**



**Eman** Eman, a mother of seven from North Gaza governorate, has faced unimaginable hardship since the war began in October 2023. Her neighborhood was one of the first to evacuate, and she and her family now live in a tent in Deir Al Balah, with no possessions or furniture. Eman suffers from asthma, made worse by the dust and stress, and her children are struggling with malnutrition. Anera, through its network of Gaza farmers and trucks of aid, has been providing fresh produce baskets to help families like Eman’s.

**“My children love these vegetable baskets. There is nothing more nutritious. Since the war, vegetables have become a luxury. I feel lucky to be receiving this fresh produce.”**

HUMANITARIAN RELIEF



## Funding Organizations

### \$1,000,000 and above

Ajram Family Foundation  
Bureau of Population, Refugees,  
and Migration  
Islamic Relief USA  
Muslim Aid USA  
The PCRF  
UBS Optimus Foundation  
UNICEF  
UNOCHA  
World Central Kitchen

### \$100,000 - 999,999

Adventist Development and Relief Agency  
Alumbra Innovations Foundation  
Anonymous  
AstraZeneca  
Capital Group  
Choose Love, Inc.  
Citi Foundation  
Deutsche Gesellschaft fur Internationale  
Zusammenarbeit GmbH  
Diane & Norman Bernstein Foundation  
Direct Relief  
Foundation For Middle East Peace  
Helping Hand for Relief and Development  
International Relief Teams  
International Rescue Committee  
Macquarie Group Foundation  
Malala Fund  
Pfizer Foundation  
Together Rising  
United Methodist Committee on Relief  
World Food Program

### \$50,000 - 99,999

Americares  
Arab American and Chaldean Council  
(ACC)  
Embassy of the State of Kuwait  
Embassy of the State of Qatar  
Envision Healthcare Charitable Fund  
Global Empowerment Mission (GEM)  
Palestine Aid Society  
Royal Embassy of Saudi Arabia  
Skoll Foundation  
Tawfiq and Nimat Fakhouri Initiative

### \$25,000 - 49,999

Exxon Mobil Corporation  
Gaza Mental Health Foundation  
HEAL Palestine  
Human Assistance & Development  
International  
Humanity First USA  
MedGlobal  
Muslim Response USA for Relief and  
Development  
Padosi Foundation  
UNHCR  
US Embassy - Lebanon  
WeCare.id

### \$10,000 - 24,999

Brother's Brother Foundation  
Embassy of the United Arab Emirates  
Humanity First UK  
Sanofi

### \$5,000 - 9,999

Center for Arab American Philanthropy

## Product Donations

Americares  
Catholic Medical Missions Board  
Direct Relief  
Health Partners for International of Canada  
Helping Hands  
Hikma  
International Health Partners  
Medical Education Training and  
Development  
Penta  
Rishho Kosei Kai  
Sanofi Genzyme Coporation  
Thaki  
Wheelchair Foundation  
World Medical Relief

## Bequests

Anera mourns the passing of these valued members of our community. Through their bequests, they continue to demonstrate their generous spirit and commitment to Anera's work and set an example for others.

Hannah Lafler  
Linda S. Handelman  
Philip Kayal  
Frazier Living Trust  
Estate of Nancy Beth Dring  
Lois Herrmann  
Anonymous

### Anera Legacy Society

Supporters who have included Anera in their wills in 2024.

Learn more at [anera.org/legacy](https://anera.org/legacy)

## Employee Giving

AbbVie  
ABM Industries  
AIG  
Allstate Giving Campaign  
Ally Financial  
American Century  
Investments Dollars for  
Donors Fund  
America's Charities  
Anchor QEA LLC  
Andersen Corp  
Andersen Tax  
Applied Materials  
Foundation  
Arch Capital Group  
Arrow Electronics  
Arthur J. Gallagher & Co.  
Associations Inc.  
Baird Foundation  
Baker Hughes  
Bank of America Employee  
Giving Campaign  
Baxter  
Bayer AG  
Becton Dickinson  
Berkadia Commercial  
Mortgage  
Best Buy  
Bill & Melinda Gates  
Foundation  
Black & Veatch Corporation  
Employee Matching Gifts  
Fund  
Blackbaud  
BNY Mellon's Community  
Impact Programs  
BorgWarner  
Boston Scientific  
Bristol-Myers Squibb  
Company  
Broadcom  
Burns and McDonnell  
Foundation Matching  
Gifts Fund  
C.H. Robinson  
Cardinal Health

Catalent Pharma Solutions  
Caterpillar Foundation  
CDW  
Charles Stewart Mott  
Foundation  
Cheniere Energy  
Chevron  
Chubb Charitable  
Foundation  
Comcast  
Commonwealth Fund, Inc  
Constellation Brands  
Consumers Energy  
Company  
Costco Wholesale  
Corporation  
CrowdStrike Gives Back  
CVS Health  
Danaher  
Danaher Foundation  
Deloitte  
Diageo  
Disney  
Dodge & Cox  
Duolingo  
Durfee Foundation  
Eaton Corporation  
Ecolab  
Edward Jones Matching  
EE Charitable Matching  
Contribution Program  
Eide Bailly LLP  
Eileen Fisher Inc  
EIX Employee Giving  
Community  
Kirkland and Ellis  
Foundation  
Encore Capital Group  
Etsy  
Exelon  
Fannie Mae Serve Program  
Fidelity Giving Marketplace  
First Horizon Foundation  
Ford Foundation  
Fortitude Re

Franklin Templeton  
Freddie Mac Matching  
Freeport-McMoRan  
Foundation  
Gap Inc.  
Gates Industrial  
Corporation Foundation  
GE Aerospace Foundation  
GivingForce Foundation  
Glenmede Corporation  
Global Impact  
Goldman Sachs  
Graham Holdings  
Company  
Grainger  
Hanson Bridgett  
HCA Healthcare  
Henry J Kaiser Family  
Foundation  
Hiya Inc  
Honda GO  
HPS Investment Partners  
LLC  
Husch Blackwell  
Iconiq Capital  
IQVIA  
Jackson National Life  
Insurance  
Johnson & Johnson  
JP Morgan Chase  
Foundation  
KeyBank Foundation  
Kimberly-Clark  
Kirkland & Ellis LLP  
Lawrence Livermore  
National Laboratory  
Helping Others More  
Effectively (HOME)  
Lease Crutcher Lewis  
Linde  
Link Logistics Real Estat  
Holdco LLC  
London Stock Exchange  
Group  
L'Oreal  
Macmillan

Marathon Petroleum  
Markel Corporation  
Masimo Corporation  
Mastercard Employee  
Giving  
Mathematica  
Mattress Firm  
McGraw Hill  
McKesson Foundation  
McMaster - Carr Supply  
Company  
Medtronic Foundation  
Merck Foundation  
Missouri Foundation for  
Health  
Morrison Foerster  
Foundation  
MSG Entertainment Group  
LLC  
Mutual of Omaha  
Nielsen Foundation  
Nordson  
Northern Trust  
NRG Energy  
Outten and Golden LLP  
Pacific Gas and Energy  
Patagonia Inc  
Patterson Belknap Webb &  
Tyler LLP  
Paul Hastings  
Pepsico Foundation  
Matching Gifts Program  
PerkinElmer  
Portland General Electric  
PPG Industries  
Prime Therapeutics  
Qualcomm Inc  
Reckitt  
Riot Games, Inc.  
Robert Half  
Rocket Mortgage  
Schneider Electric  
Foundation  
Schrodinger, Inc.  
Sempra Energy  
Sherwin Williams

SiriusXM  
Societe Generale  
Sony Music  
SPARK  
SS&C Technologies  
Matching Gifts  
Stavros Niarchos  
Foundation  
StepStone Group  
Stifel Matching  
Synchrony  
Tapestry Foundation  
TD Ameritrade  
The Amgen Foundation  
The Boeing Company  
The Boston Consulting  
Group, INC  
The Carlyle Group  
The Giving Back Fund -  
Percent Pledge  
The Home Depot  
Foundation  
The Lubrizol Corporation  
Trowbridge & Trowbridge  
Truist  
Two Sigma  
U.S. Bank Foundation  
UBS Financial Services Inc.  
UK Online Giving  
Foundation  
Unum Group  
Verizon Foundation  
Viasat Inc.  
Virginia Wellington Cabot  
Foundation  
Vizient Inc  
Waitt Foundation  
Walmart and Sam's Club  
Warburg Pincus LLC  
Wells Fargo Community  
Support Campaign  
Wyndham Hotels  
Your Cause  
Zimmer Biomet

# INSTITUTIONAL DONORS & FUNDERS





# Board

## Officers

### Joseph P. Saba, Chair

Senior Advisor for Conflict & Fragility, World Bank. Adjunct Professor Loyola Law School

### Teresa C. Barger, Vice Chair & Treasurer

Founding Chief Executive Officer & Chief Investment Officer, Cartica Capital

### Alfred N. Khoury, M.D., Secretary of the Corporation

Director, INOVA Fairfax Hospital

### Sean Carroll (ex-officio)

Anera President and CEO

### George Doumar (ex-officio)

Legal Counsel  
Doumar Martin PLLC

## Members

### Jim Abdo

Founder, President & CEO of Abdo Development LLC

### Rebecca Abou Chedid

Partner, Norton Rose Fulbright

### Jihan Andoni

CEO, Zeva Incorporated

### Nader Barakat

Cofounder and Principal Hardware Engineer, Xirgo Technologies, LLC

### Judy M. Barsalou

Former Regional Representative, The Ford Foundation

### Mourad Elayan

Founder & CEO, MB Management

### Tarek Ghandour

International Sales Manager

### Jean Glock

Owner & President, JNG Worldwide

### Edward “Skip” Gnehm Jr.

Professor Emeritus, Elliott School of International Affairs, George Washington University

### John Gurley

Partner, ArentFox Schiff LLP

### Elias Habayeb

Chief Financial Officer, Corebridge Financial

### Matt Haddad

Senior Associate General Counsel, Anthem, Inc.

### Alison Hills

Vice President Public and Government Affairs, TotalEnergies

### Piney Kesting

Owner, Piney Kesting, Writing and Consulting

### Nabil Elie Khoury, M.D., F.A.C.E.P., F.A.C.P.

Regional Medical Director, Envision Healthcare

### Rania Kiblawi

Senior Public Affairs Advisor at Aramco Services Company

### Samar Hussein Langhorne

Nonprofit Organization Management Professional

### Nasser Mikdadi

Controller

### Thairah “Cindy” Mousa

Assistant Vice President, Employee Relations, Ochsner Health

### Mona Naffa

Monaco Holdings/USA and MENA Region

### Kathleen Rogers

President, EarthDay.Org, Washington DC

### Victoria Sams

Independent Scholar

### Mamoon Sbeih

President of Middle East & North Africa, APCO Communication Consultancy

### Pilar Solano

Head Of Division, European Investment Bank

### Robert Trice

Senior Vice President for Corporate Strategy and Business Development, Lockheed Martin Corporation, ret.

### Katherine Wilkens

Senior Advisor, National Democratic Institute

### Jeannie Yamine

Former Sr. Communications Officer at World Bank Group

### Omar Zalatimo

Director, Functional Neurosurgery, Co-Director, Comprehensive Spine Center at The Sandra and Malcolm Berman Brain & Spine Institute

### Fady Zeidan

Former General Counsel & Head of Legal and Governance, The Global Fund

*Hussein, a musician from Bebnine, Akkar, battles heart disease and diabetes. Amid Lebanon’s economic crisis, he turned to Anera for free medicines to stabilize his health.*



# Staff

## WASHINGTON, DC

Sean Carroll,

*President & CEO*

Jainelle Blenhyne-Gaillard

Jackelyne Briseño

Dalia Dahir

Liz Demarest

Durann Dungee

Steve Fake

Haley Gerlofs

Madison Jerabek

Holly Jordan

Lina Kanaan

Nisreen Khalaf

Rula Kort

Skylar Lawrence

Derek Madsen

Elizabeth Obeidat

Demeco Ricks

Daniel Riley

Michelle Rodriguez

Edelmiro Santos

Clyde Seegobin

Claire Walker

## MIDDLE EAST, REGIONAL

Mohamed Abbas

Muhammad Atieh

Amjad Ebeid

Abdulrahman “Abed”

Elhalafawy

Nadia Al Shadhir

## AMMAN, JORDAN

Saeed Melhem

Hadeel abu Obaid

Saddam Sayyaleh

Laila Yahya

## LEBANON

### Beirut

Samar El-Yassir,

*Country Director*

Omran Abdelghani

Hanadi Abdo

Shaymaa Abed Al

Razik

Farah Abdul Jawad

Ali Al Ahwal

Farah Ali

Leen Ataya

Reem Aziz

Ali Bahsoun

Ola Basset

Maria Berbari

Jihane Charafeddine

Heba Dabliz

Nagham El Hindi

Ayman Estephan

Mohamad Eter

Natalie Fakih

Ahmad Fares

Romy Faour

Sirine Fattoum

Sarah Hachem

Khalid Hamwi

Aya Hawarinah

Sara Hijazi

Mira Ikrayem

Rima Kamal

Louai Ladiki

Hussein Loubani

Farah Maalouf

Lama Mahmoud

Oussama Majzoub

Hisham Mostafa

Reine Moubayed

Omar Obeid

Karl Osta

Maya Saleh

Joyce Sassine

Karine Taha

Malakeh Terkawi

Yara Yassine

Dima Zayat

### Akkar

Saleh Abdul Wahab

Maysaa Abou Libdeh

Saraa Al Dinnawi

Mayssa Qassem

Marwa Saadi

### Bekaa

Youssef Abdul Khalek

Mahmoud Abdullah

Khalek Aya Solh

Michelle Chamoun

Manar Ibrahim

Manal Romeh

### South Lebanon

Jana Antar

Ahmad Dahar

Dana Hamdan

Mohamad Kaddoura

Alaa Mahmoud

Mohamad Moussa

Ouyoun Shabayta

### Tripoli

Miral Eid

Habiba Ghorr

Safa Hanouf

Bashar Khalil

Hala Maamari

Nour El Houda El

Masri

Bassam El Qadi

Sara Rifai

Jocylene Rizk

## PALESTINE

### Jerusalem

Sandra Rasheed,

*Country Director*

Ma’moun Abu Gheith

Tamara Handal Al-

Hodali

Barihan Al-Khatib

Denise Habash

Hazboun

Samia Majlaton

Emile Makhoulouf

Lana Noureddin

### Ramallah, West Bank

Miral Al-Bess Karakra

Tamara AlJundi

Nour Awad

Haya Bayari

Mai Farsakh

Rahaf Ibrahim

Mohened Ghassan

Itayim

Sulieaman Mleahat

Mohammed Musalam

Naser Qadous

Ibtisam Rashid

Ahmad AbuSneineh

Rahaf Sheikh Ibrahim

Lubna Zraiq

### Gaza City

Mohammad Abu Jahal

Mostafa Al-Ghosain

Ashraf Al-Shobaky

Asmaa Baroud

Ahmed El Helou

Suad Lubad

Sami Matar

Islam Mohana

Ahmad Najjar

Ibrahim Najjar

Asmaa Shaheen

Mohammed Shannan



**Mousa Shawwa**, 41, was tragically killed by an Israeli airstrike on March 8, 2024 shortly after returning home from helping displaced families in Rafah. He was wearing his Anera vest. **His death leaves a void in our hearts and the humanitarian community.**

# ANERA BOARD & STAFF

Statement of Activities

	2024	2023
Support and revenue		
Non-financial contributions	\$ 133,935,627	\$ 148,642,985
Governmental grant revenue	2,912,575	5,955,599
Non-governmental grant revenue	27,821,858	11,381,059
Contributions	39,400,636	7,290,663
Investment (loss) gain	772,260	(134,753)
Currency valuation gain (loss)		(764,684)
Other income	114,714	41,835
Total support and revenue	204,957,670	172,412,704
Expenses		
Program services		
Medical donations & health services	167,950,779	150,822,675
Community & economic development	2,824,101	9,000,587
Education	5,181,414	5,014,176
Total program services	175,956,294	164,837,438
Supporting services		
Management & general	4,765,812	4,584,586
Fundraising	1,955,838	1,600,110
Total supporting services	6,721,650	6,184,696
Total expenses	182,677,944	171,022,134
Change in net assets	22,279,726	1,390,570
Net assets:		
Beginning	16,373,591	14,983,021
Ending	\$ 38,653,317	\$ 16,373,591



**Thank you, UNICEF, for 10 years of invaluable support in the Middle East.**  
We are deeply grateful for your lasting partnership.

*PHOTO: UNICEF hygiene kit distribution in Mawasi, Khan Younis, Gaza.*



In 2024, your generosity helped transform lives in vulnerable communities across Palestine, Lebanon, and Jordan.

But the need remains urgent, and **we can't do it without you.**

**Join us in making an even greater impact.** Spread the word, start a fundraiser, attend an event, or make a donation. Together, we can do more.

BE IN THE KNOW

[anera.org](https://anera.org)

Check out our website featuring photos, videos, statistics, success stories and more.

[anera.org/blog](https://anera.org/blog) | *The Olive Press*

Our blog features a wide variety of perspectives from our areas of work.

[anera.org/events](https://anera.org/events)

Come to an event near you and learn about the programs we deliver.

Facebook | BlueSky | Instagram | LinkedIn

Follow [@aneraorg](https://twitter.com/aneraorg) on social media to view photos and be up-to-date on all of our work.

DONATE OR RAISE MONEY

[anera.org/fundraise](https://anera.org/fundraise)

Set up your own fundraiser for a run, bike ride, an event, your birthday, or a special time of year.

[anera.org/monthly-giving](https://anera.org/monthly-giving)

Join our Visionaries, a group of committed monthly donors creating long-term impact.

[anera.org/legacy](https://anera.org/legacy)

Your planned gift ensures that Anera will be there tomorrow.

[anera.org/donate](https://anera.org/donate)

Make a donation now to fund the quality programs Anera is delivering today.

2024 FINANCES

June 1, 2023 - May 31, 2024

HOW YOU CAN GET INVOLVED





# ANERA'S MIDDLE EAST OFFICES

○ **MAIN OFFICE**

○ **Sub office**



**Anera**

1111 14th Street NW, #400

Washington, DC 20005

202.266.9700 | [anera@anera.org](mailto:anera@anera.org)

[anera.org](http://anera.org)